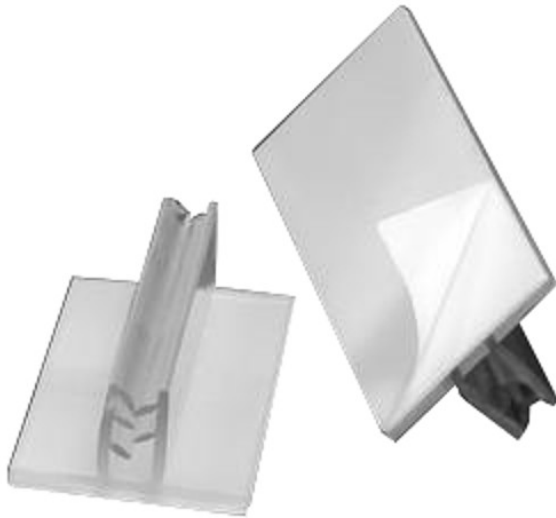


Finned Sign Foot

[]

**Your Price:**
\$14.50**Length:**

1 inch

3 inch +\$36

3 inch Removable +\$43.50

Width:

Narrow

Medium +\$4

Prices and specifications are subject to change. Click the link to view the latest information: [Finned Sign Foot](#)

Finned sign feet have a straight-sided profile and grip stock up to 0.085 thick. Downward titled fins on the inside of the sign foot create an extra-secure grip on the sign. Available with a narrow base for use in areas where counter or shelf space is limited, and a medium base for more normal applications. Peel-and-stick permanent foam tape on the bottom of the base keeps the sign from tipping.

Sold in 1" and 3" lengths. The 3" medium width is also available with removable adhesive.

Features

- The narrow base finned sign foot is 0.575" wide x 0.525" tall.
- The medium base finned sign foot is 1.085" wide x 0.525" tall.
- Sold in 1" and 3" lengths in clear PVC.
- The fin design makes for excellent gripping and easy inserting of stock.
- Supports signs up to 0.085" thick.
- Works on vertical and horizontal surfaces.
- Sold in packages of 100.