

**ISP** Stitching & Bindery Products  

---

A Division Of Samuel Strapping Systems

INSTRUCTION  
SHEET

**INFEEED ASSEMBLY OPTION**  
**RBM1872A**

Model B2000

Introduction .....	3
Installation .....	4
Components List .....	6

## Operation

The infeed assembly helps guide sets of paper into the BookletMaker. The paper entering the BookletMaker is directed between the wheel of the Infeed Assembly and the belt on the BookletMaker. The action of the wheel and belt causes the paper passing between them to be pushed into the BookletMaker towards the paper stops. When each paper of a set are forced into the BookletMaker by this method, it helps square up the trailing edges of the paper stack.

When the individual sheets are entering the BookletMaker too spread out, meaning that the first paper into the stitch chamber arrives much sooner than the last sheet, the first sheet may trigger the stitch cycle before the later sheets have finished entering. The result will be an uneven booklet. The optional ISP Cycle Delay kit CB BB3000D7 is designed to delay the stitch cycle so that the Infeed Assembly has time to correctly feed spread out paper sets into the BookletMaker.

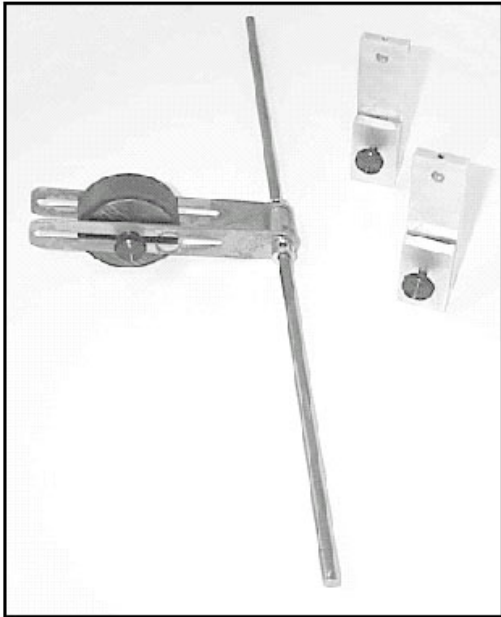
To avoid excessive static buildup use the infeed assembly only when necessary.

## Adjustment

To make infeed assembly adjustments, for different paper sizes, follow installation instructions starting with step 6.

# Stitch'n Fold

## INSTALLATION



(fig 1)

### STEP 1:

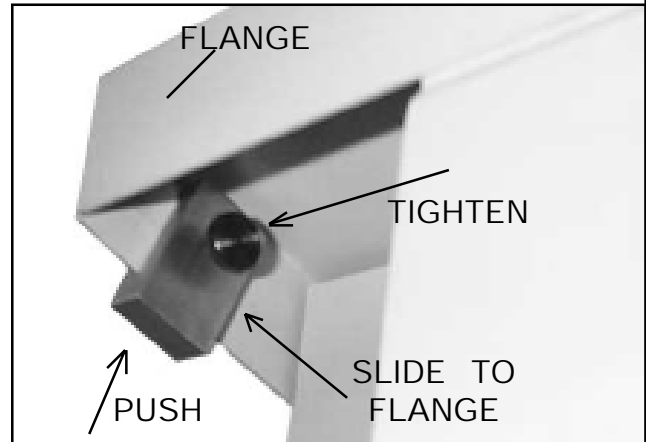
Assemble the components as shown in figure 1. Use the parts illustration on page 6 to help with the assembly process.



(fig 2)

### STEP 2:

Turn off the power and unplug the bookletmaker. Loosen the thumb screw on one of the end brackets and slip it onto the flange of the infeed table as in figure 2. Before tightening the thumb screw, push up on the end bracket and slide it until it touches the flange of the infeed table. This will ensure that the shaft assembly will be straight across the infeed table. See figure 3 for clarification.



(fig 3)

### STEP 3:

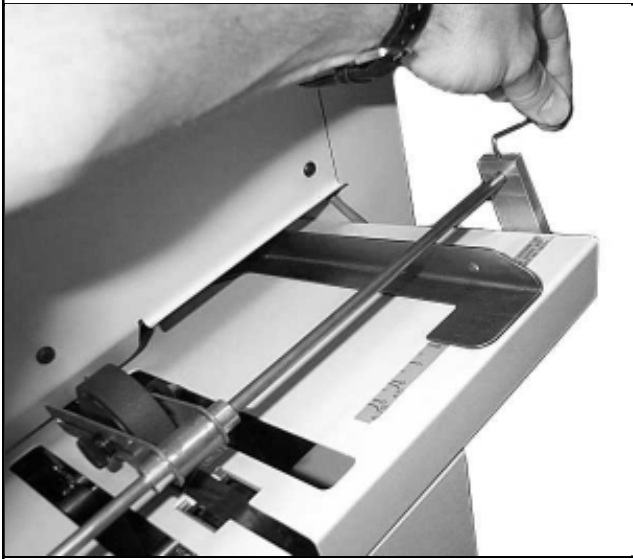
Loosen the set screw on the top of the mounted end bracket and place the infeed shaft assembly through the larger hole as shown in figure 4. DO NOT tighten the set screw at this time.



(fig 4)

### STEP 4:

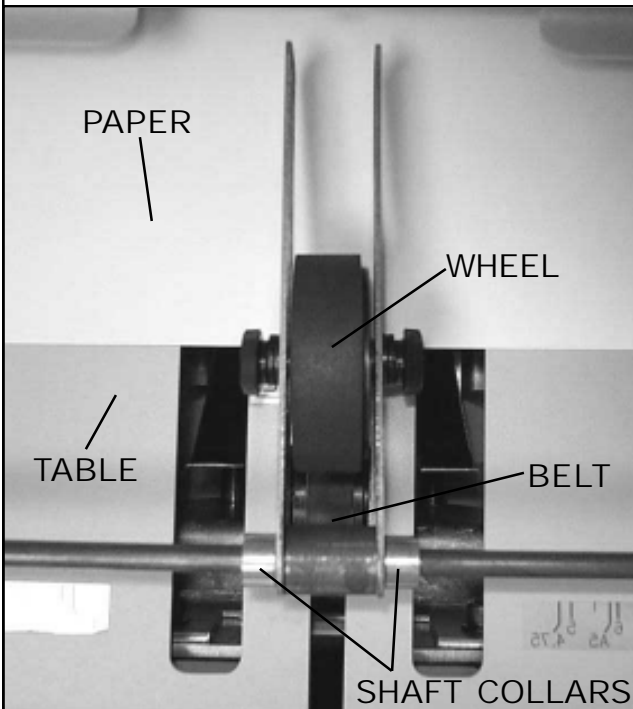
Mount the remaining end bracket as it was done in step 2. Center the infeed shaft between the two end brackets and tighten the set screws found on each end bracket. See figure 5.



(fig 5)

STEP 5:

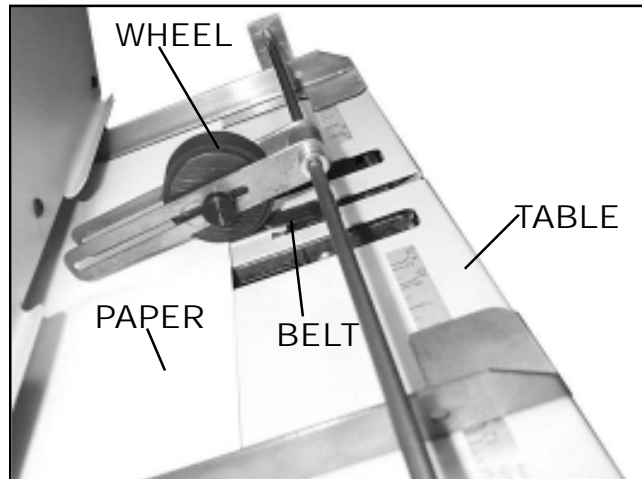
The wheel should be centered directly over the bookletmaker belt. See figure 6. To adjust the side to side alignment of the wheel, loosen the shaft collars, move the whole subassembly to the correct position, and retighten the shaft collars.



(fig 6)

STEP 6:

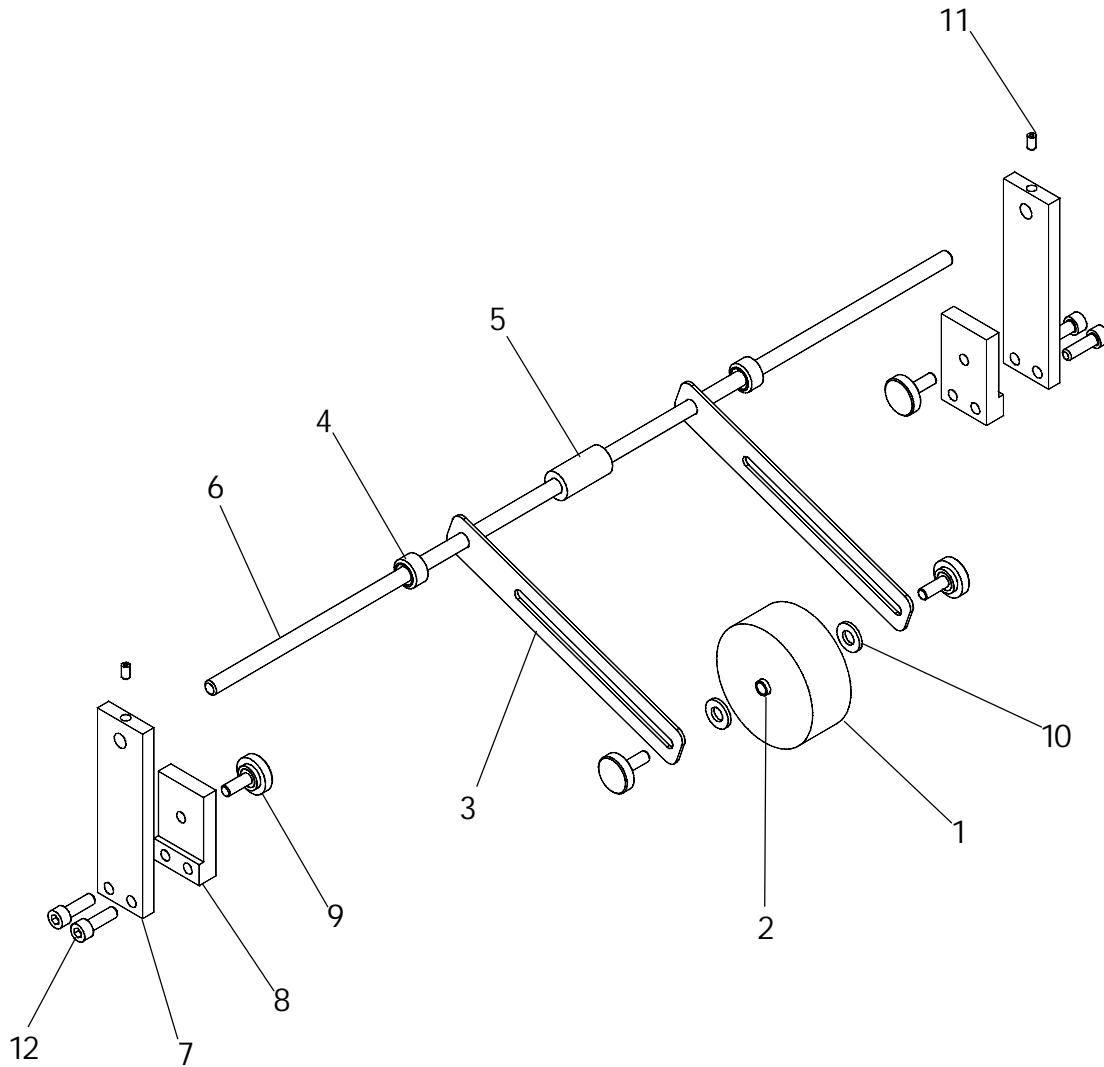
The wheel hub has to be moved to the correct position each time the paper length changes from run to run. To make the adjustment, place a sample piece of work into the bookletmaker and be sure the sample is against the set stops. Loosen the two thumb screws on either side of the wheel hub. Slide the wheel hub to where the wheel is resting on the bookletmaker belt and nearly touching the sample work. Retighten the thumb screws. See figure 7 for a view of the correct position. If the work set is thick the wheel may have to be moved slightly to avoid contact with the set. If the set of paper is in contact with the wheel during the stitch cycle, the stitch and the fold quality will be affected.



(fig 7)

# Stitch'n Fold

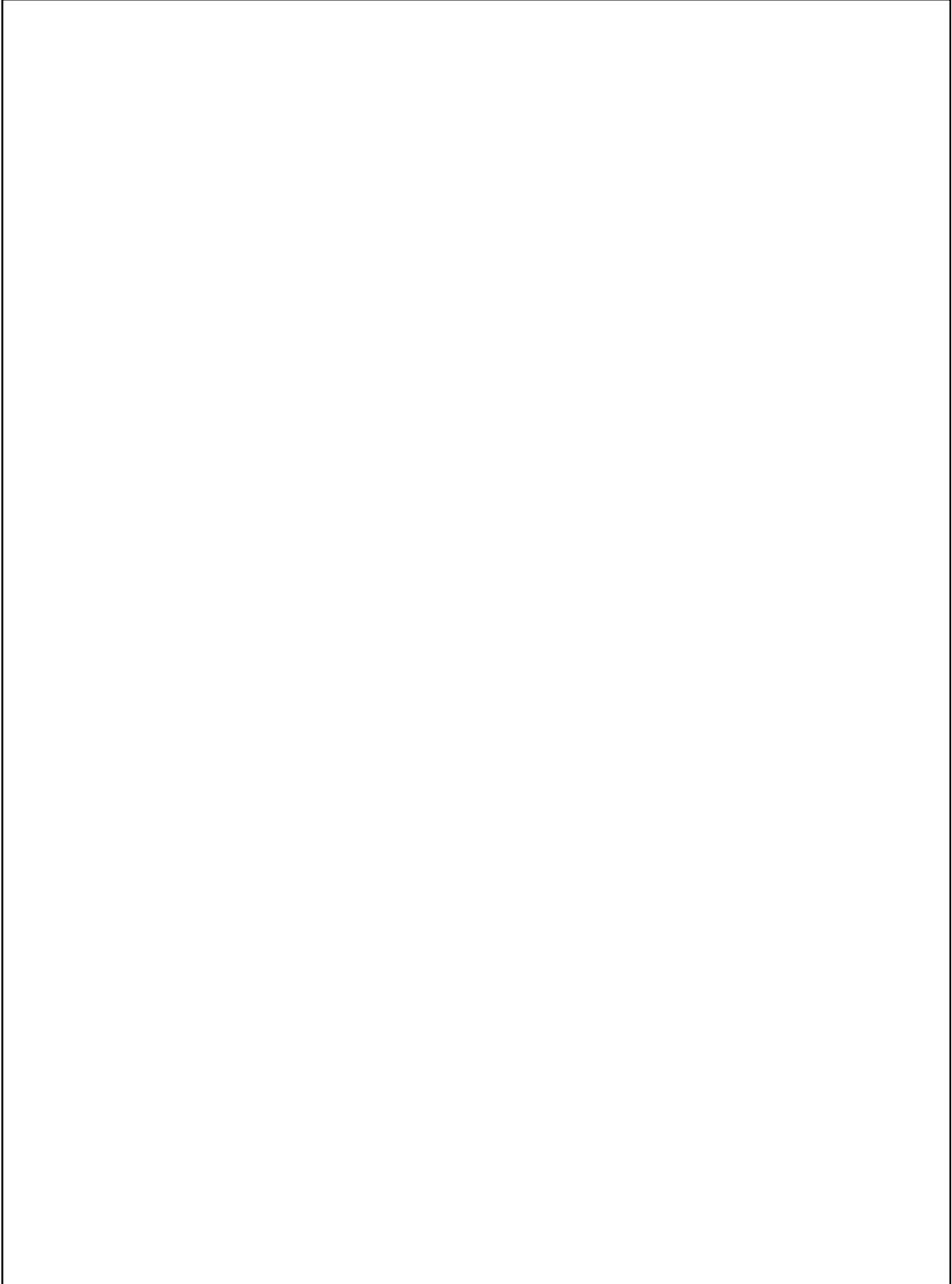
## INFEED ASSEMBLY (OPTIONAL)



(RBM1872A-Scene-1)

Index Number	Part Number	Part Name	Number Required	Index Number	Part Number	Part Name	Number Required
1	RBM1865F	Wheel Hub	1	7	RBM1871F	Infeed Bracket, Outer	2
2	RBM1866F	Threaded Spacer	1	8	RBM1873F	Infeed Bracket, Inner	2
3	RBM1867F	Wheel Assy Bracket	2	9	CGG44C	Thumb Screw Assy	4
4	RBM1868F	Shaft Collar	2	10	CB806	Washer, .250 Flat	2
5	RBM1869F	Spacer	1	11	D31028F	Screw, 6-32x.250, Set	2
6	RBM1870F	Infeed Shaft	1	12	CB154	Screw, 10-32x.625, Soc. Hd.	4

NOTES:



# ISP Stitching & Bindery Products

A Division Of Samuel Strapping Systems

USA:

3911 S. Memorial Dr. Racine, WI 53403

1-800-345-6641 1-262-598-5421

Fax: 1-262-598-5426

[www.ispstitching.com](http://www.ispstitching.com)