

CoilPro 2000

Operation Manual



POWERHOUSE

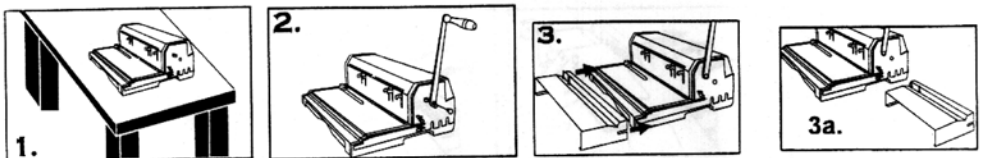
INTRODUCTION

Congratulations on the purchase of your new CoilPro 2000, a professional and heavy-duty coil punch and binding machine. Your CoilPro 2000 was carefully designed with a full range of functions and premium quality components to guarantee an effortless and professional bind, as well as many years of trouble-free service.

IMPORTANT

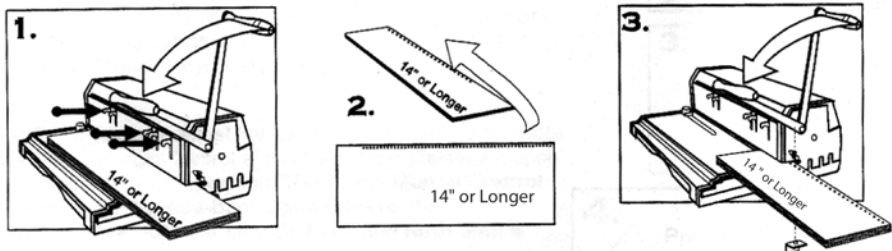
We recommend that you take a few minutes to familiarize yourself with the functions of your new CoilPro 2000. You will find that anyone can achieve professional results with just a little practice.

1. Place your new CoilPro 2000 on top of a sturdy working table.
2. Remove the screw from the punching axle. Insert the punching handle, in a vertical position, onto the punching axle and tighten back the screw into the punching axle (make sure screw is well fastened).
3. Attach the coil inserting table to the front of your CoilPro 2000 or place it next to your CoilPro 2000, which ever you find more convenient for you.



FOR PUNCHING DOCUMENTS 14" (356MM) OR LARGER

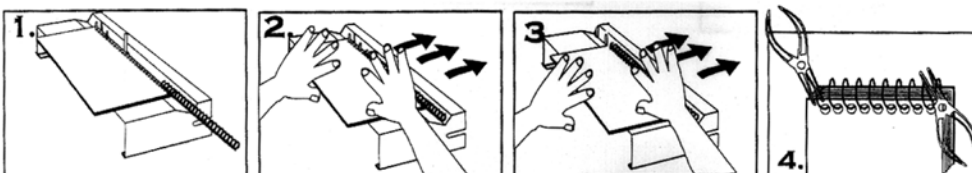
1. Align sheets as indicated on punch throat ruler. Make sure all die disengagement pins are pushed in. Insert sheets and pull handle forward to punch.
3. Remove sheets and flip them over.
4. Insert sheets from right-hand-side. Align punched hole on the continuous punch guide. Pull the handle forward and punch.



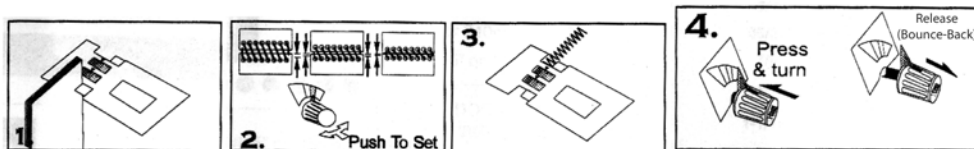
REMARKS

- a) When using your CoilPro 2000 for the first time, punch a few waste sheets. This will clean-off any excess oil on the punching dies.
- b) Recommended number of sheets per punch: 12-15 (20lb paper).
- c) Maximum recommended single punching capacity: 17 sheets (20 lb paper).

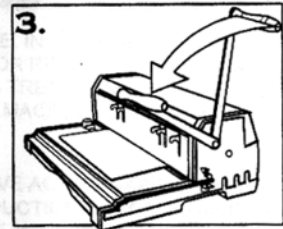
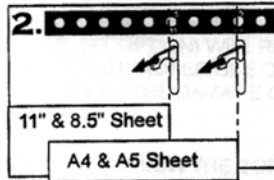
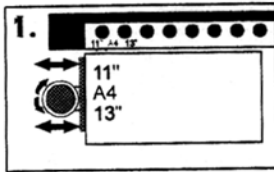
1. Place your punched document on the coil inserting table. Place the first and fourth hole on the coil inserting guides.
2. Insert coil from right-hand-side and slide hand.
3. Upon reaching the last holes, remove document from coil inserting guides and finish inserting the coil.
4. Use a set of pliers to cut-off any excess coil. Make sure you bend-in both coil ends to keep the coil in place.



1. Use the coil diameter selector to determine the correct depth margin and coil diameter
2. To adjust to the correct punching margin, press and rotate the depth margin control. Release it upon reaching the desired position. The depth margin control button must bounce-back upon release. If it does not bounce-back, rotate it slightly back and forth until it does so.
3. (optional) You may use the coil diameter selector check or double-check that you are using the correct Coil Diameter for your document.



1. Use the punch throat ruler and the side margin control to center the punching of your document.
2. Insert a sheet of scrap paper the same type as your document and make sure you disengage any hole that is left partially perforated at the edge of the page.
3. Insert sheets and pull handle forward to punch.



COIL SIZE TABLE

LEGAL (14" OR 356MM) = 59 HOLES OFFICIO (13" OR 330MM) = 54 HOLES A4 (11.69" OR 297MM) = 49 HOLES LETTER (11" OR 279MM) = 46 HOLES				LETTER-LANDSCAPE (8.5" OR 216MM) = 35 HOLES A5 (8.25" OR 210MM) = 34 HOLES 1/2 LETTER (5.5" OR 140MM) = 11 HOLES			
NO. SHEETS (20 LB)	DOCUMENT INCH	COIL MM	MM	NO. SHEETS (20 LB)	DOCUMENT INCH	COIL MM	MM
25	1/8"	3.2	5	180	3/4"	19.0	20
35	5/32"	4.0	6	200	25/32"	19.8	22
45	3/16"	4.8	7	230	7/8"	22.2	25
60	1/4"	6.4	8	250	1"	25.4	28
70	9/32"	7.2	9	280	1-1/16"	27.0	30
80	5/16"	7.9	10	300	1-1/8"	28.5	32
10	13/32"	10.3	12	350	1-5/16"	33.3	38
120	15/32"	11.9	14	400	1-9/16"	39.7	45
150	19/32"	15.0	17	450	1-7/8"	47.5	50

* Note: Does not include covers. It is always better to measure the uncompressed thickness of your book and select the coil size using the document column in this table.



Advanced Document Systems & Supply, Inc.

PHONE: 800-808-2377 FAX: 888-237-7329

www.adss.net