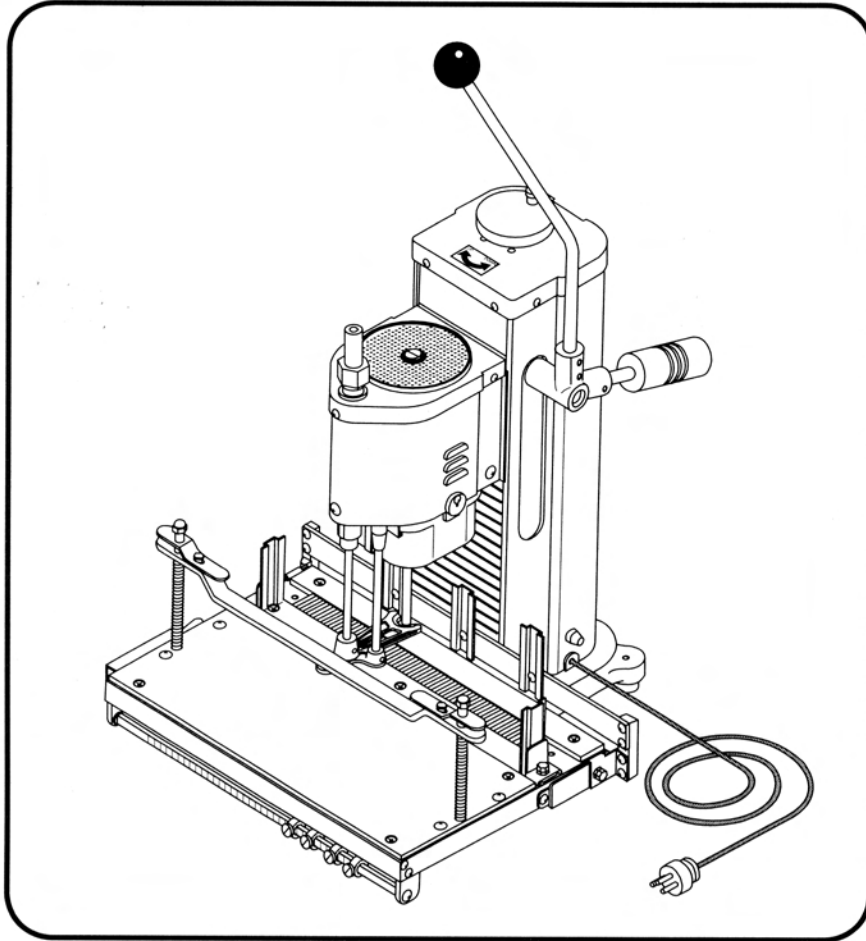


OPERATION MANUAL

ELECTRIC PAPER DRILLER

MODEL NO : FILEPECKER-III (60/100/140)



※ Read this "Operation Manual" carefully before use for safe processing and long use



Advanced Document Systems & Supply, Inc.

Phone: 800-808-2377

www.adss.net

CONTENTS

1. Features	1
2. Technical Data	2
3. Parts	3
4. Standard & Optional Equipment	4
5. Cautions! read prior to use	5
6. Preparations before use	6
7. How to operate	7
(1) Setting the hollow drill	
(2) Adjusting the drilling depth	
(3) Setting the paper and Adjusting the points to drill on the table	
(4) Drilling	
(5) Movement of the table and How to set the hole pitch	
(6) Discharging the paper dust	
(7) Resharpener the drill bit	
8. Other maintenances	11
9. The assortment of hollow drill bits	11
10. Partlist	12

1. Features

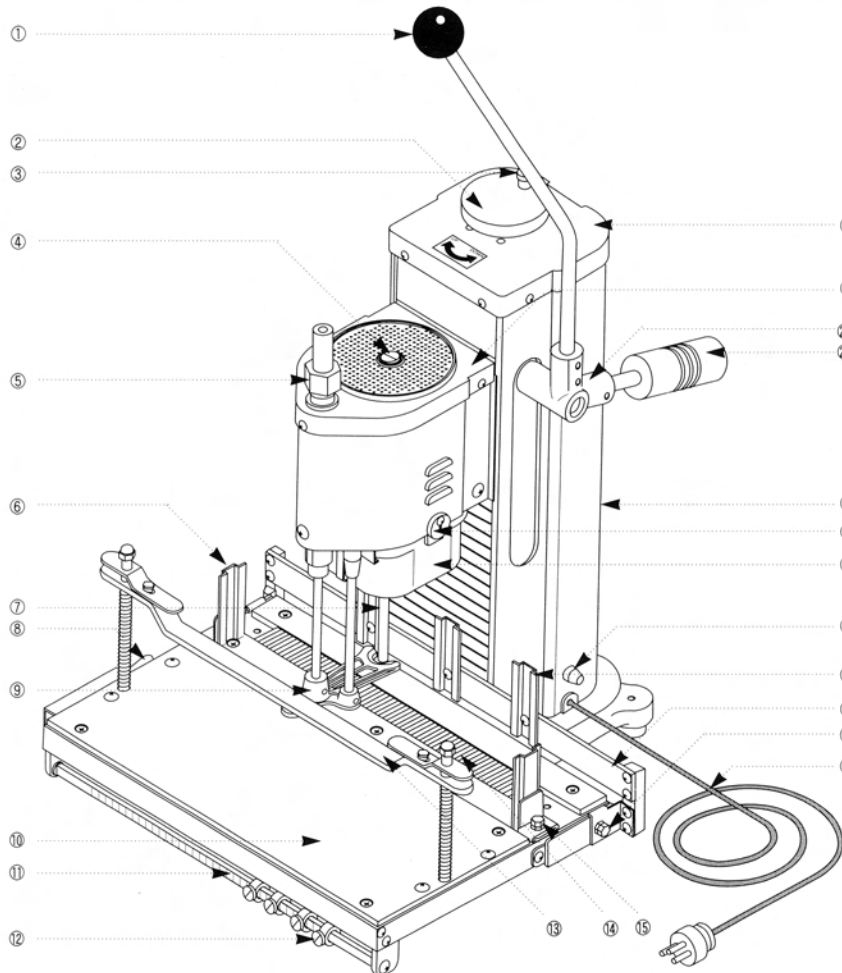
The electric paper driller -Filepecker III- is a new drilling machine for the utmost heavy duty paper. It has been very successfully tested in the practice. The Filepecker III has been developed based on 25 years experience and is built in combinable units system. It works according the principle of a rotating hollow drill bit by special designed motor.

According the variation of the model from Filepecker III-60 to Filepecker III-140, the maximum drilling capacity reaches up to 600-1,400 sheets of paper by one breath stroke. Furthermore the surprising drill capacity, the paper driller -Filepecker III - has the following properties.

- Bores through 62-140mm thick stack of paper in less than 1-3 seconds.
- Very smooth and quiet drilling process.
- Powerful and vibrationless drilling by special designed motor equipped.
- Continuous multi-hole drilling with the universal stop gauge and pre-programmed bar in easy way.
- Hollow drill bits made of special hardened steel for long use.
- Special sharpener equipped for quick and easy regrinding of drill bit.
- Adjusting of the height of vertical stroke can be easily done by simple turning the handle of vertical adjustor.
- Paper cartridge is enable to bind the holed paper with special designed "Filing strip"

2. Technical Data

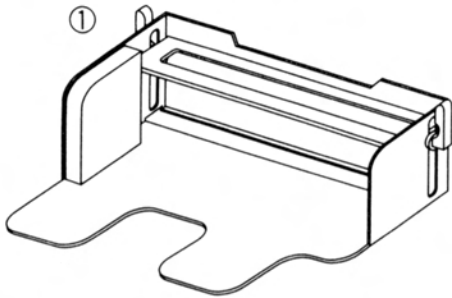
Item	Description		
	Filepecker III 60	Filepecker III 100	Filepecker III 140
Number of drill	1	1	1
Drilling capacity	62MM (620 sheets of paper 80g/m ²)	100MM (1,000 sheets of paper)	140MM (1,400 sheets of paper)
Max. Vertical stroke	Maximum 87 MM	105 MM	157 MM
Back gauge margin		5~60MM	
Table swing		Maximum 286 MM	
Table size		460(width)x300(depth)MM	
Maximum paper size		420m(A3-size longitudinal)	
Diameter of hollow drill bit		3.0MM φ~9.0MM φ	
Length of blade of drill bit	30 ~62MM	30 ~100MM	30 ~140MM
Paper feed		manual	
Pitches of hole (moving the table)	Free pitch for universal gauge For optional preprogrammed bar 1. Keeping the table center 2. 3 holes(pitch of 80 MM for A4- size longitudinal) 3. 4 holes(pitch of 80 MM for A4- size longitudinal) 4. 4 holes(pitch of 45,65, and 45 MM for A5- size longitudinal) 5. 30 holes(pitch of 9.5 MM for A4- size longitudinal) 6. Empty for user's request		
Paper cartridge size (max.holding capacity)	360 × 250 × 60 MM (500 sheets of paper)	360 × 250 × 90 MM (800 sheets of paper)	360 × 250 × 130 MM (1,200 sheets of paper)
Power supply	1 x 110,220 ,230 volt, 50/60 Hz (other electric current possible with transformer)		
Power consumption	184 watts		
Drill rotation	1,650 RPM, 4 Poles		
Net weight	approx. 31.6 kgs	approx. 32.7 kgs	approx. 34.8 kgs
Gross weight	approx. 36.5 kgs	approx. 37.6 kgs	approx. 39.7 kgs
Dimensions of machine (excluding the operation arm and balance weight)	approx.500 × 500 × 555MM	approx.500 × 500 × 595MM	approx.500 × 500 × 720MM
Dimensions of the case	approx.545 × 565 × 600MM	approx.545 × 565 × 600MM	approx.545 × 565 × 740MM



3. Parts

- ① Operation Arm
- ② Vertical Adjuster
- ③ Locking pin
- ④ Power switch
- ⑤ Clamp fixing screw
- ⑥ Centering block
- ⑦ Hollow Drill bit
- ⑧ Clutch lever
- ⑨ Paper clamp
- ⑩ Table
- ⑪ Stopper rail
- ⑫ Pitch stopper } (Universal stop Gauge)
- ⑬ Paper pusher
- ⑭ Blade receiving wood plate
- ⑮ Centering Adjustment Knob
- ⑯ Plug and Cable
- ⑰ Back margin Adjustment Knob
- ⑱ Back margin Adjustment Plate
- ⑲ Paper Block
- ⑳ Fuse Box
- ㉑ Chip Box
- ㉒ Chip Box Knob
- ㉓ Tool box
- ㉔ Balance weight
- ㉕ Arm Bracket
- ㉖ Motor Cover
- ㉗ Body Cover

4. Standard & Optional Equipment



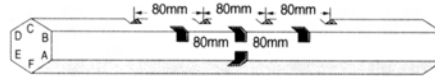
(1) Standard Equipment

- ① Paper Cartridge
- ② Sharpener with tungsten alloyed metal
- ③ 2 pcs of hollow drill bit (size upon user's request)
- ④ Gimlet for cleaning the Jam in the Hollow drill bit
- ⑤ Hexagonal spanner & drill bit ejector
- ⑥ Oil stone
- ⑦ Hexagonal wrench
- ⑧ Additional fuse
- ⑨ Screw Driver
- ⑩ Blade receiving wood plate

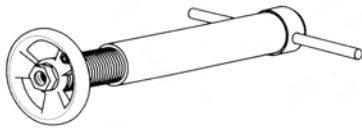
(2) Optional Equipment

1) Preprogrammed Bar

----- Pitches of preprogrammed bar-----

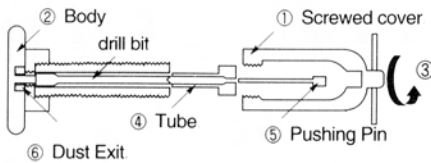


phase A	For centering position of table	
phase B	80mm pitch X 3 holes (For A4 longitudinal)	Center Position 80mm
phase C	80mm pitch X 4 holes (For A4 longitudinal)	80mm
phase D	45mm-65mm-45mm pitches, 4 holes (For A5 longitudinal)	45mm 65mm 45mm
phase E	9.5mm pitch X 30 holes (For Longitudinal for A4 Loose Leaf)	9.5mm X 30Holes
phase F	empty for user's type	



2) Paper Dust Ejector

- Separate the screwed cover (①) from the body (②) by turning it in anticlockwise (③).
- Insert the jammed drill bit into the tube (④) and insert the pushing pin (⑤) into the hole of the tube.
- Insert the combined drill bit with the pin into the hole of the body (②) and combine the screwed cover (①) with the body (②) and then continue to tighten the screw until the paper dust is coming out from the dust exit (⑥).



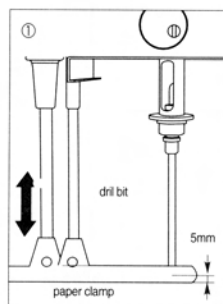
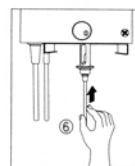
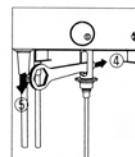
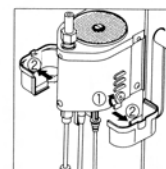
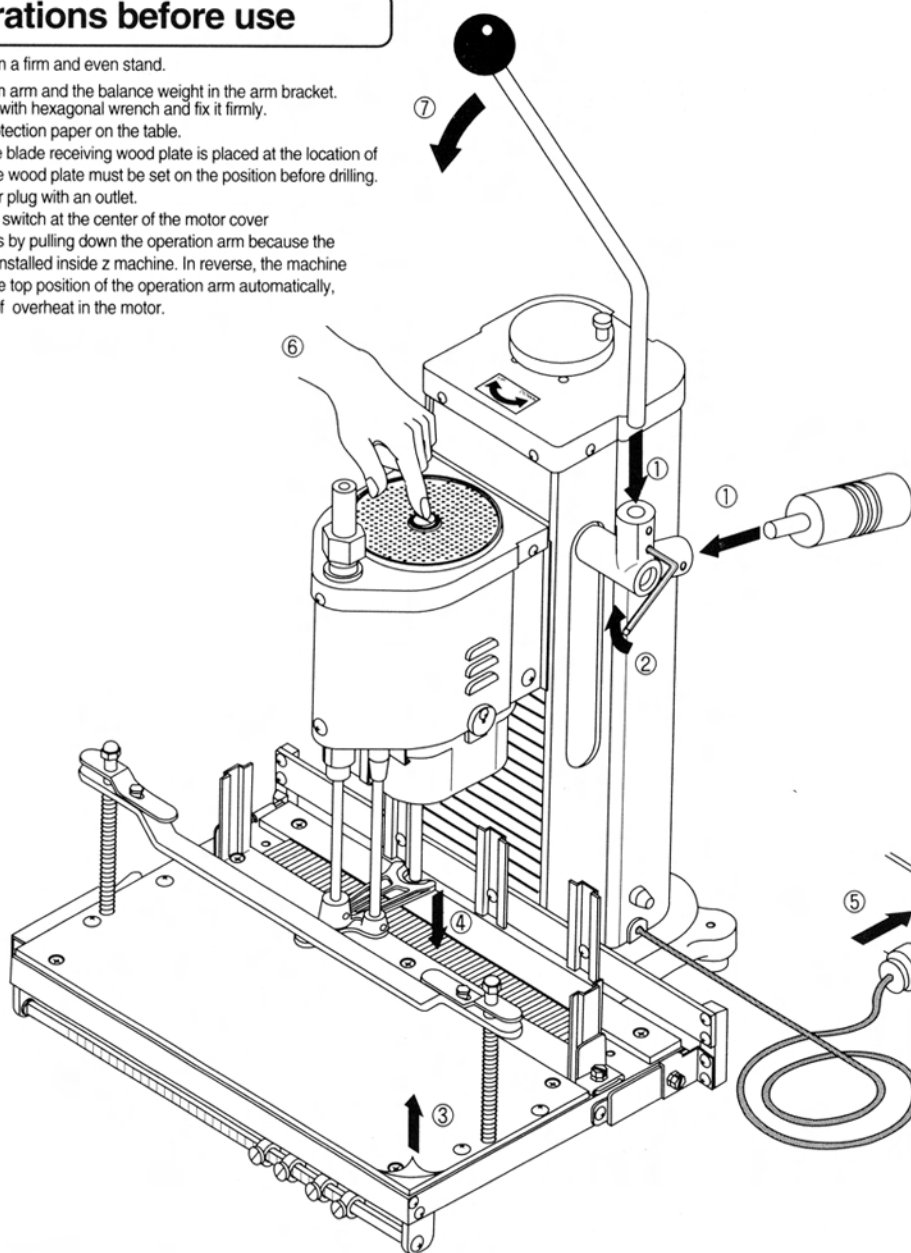
5. Cautions! read prior to use

- Do not place a hand under the hollow drill bit. There is a danger of receiving injury.
- The hollow drill bit is very sharp. Keep fingers away from drill bit.
- Turn off the power switch when carry out all the maintenance working.
- After finishing the drilling works, make sure to turn off the power switch.
- Turn off the power switch immediately when the machine has stopped while drilling. Such a halt may **cause a fire** or a burnt-out of motor.
- Make sure the clipping or staples on the paper are removed before drilling works as metal objects will damage the drill bit.
- Always check whether the blade point of drill bit has been well sharpened for easy and long use of the machine.
- Don't use the machine for the plastic, resin sheets, and the like vulnerable to melt or fire. They may melt in, and stick to the inside of the hollow drill bit, as result the drill bit may be damaged.
- If drilling is difficult with more amount of power needed than the usual condition, the blade point of the hollow drill bit should have been damaged or worn. Sharpen it.

6. Preparations before use

Install the machine on a firm and even stand.

1. Insert the operation arm and the balance weight in the arm bracket.
2. Tighten the screw with hexagonal wrench and fix it firmly.
3. Take away the protection paper on the table.
4. Check whether the blade receiving wood plate is placed at the location of below drill bit. The wood plate must be set on the position before drilling.
5. Connect the power plug with an outlet.
6. Turn on the power switch at the center of the motor cover
7. The machine starts by pulling down the operation arm because the security switch is installed inside z machine. In reverse, the machine stops to drive at the top position of the operation arm automatically, for the protection of overheat in the motor.



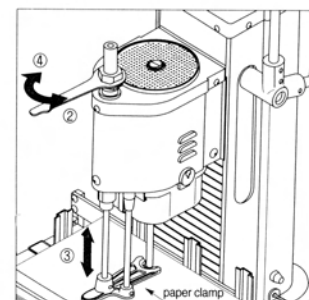
7. How to operate

(1) Attaching & Detaching drill bit

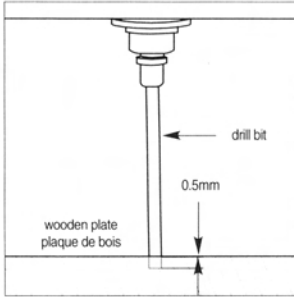
- Turn the knobs to upside (1) and pull out the chip box (2).
- Using with the ejector (3), insert it across the hole of drill chuck (4) and push down the opposite part with a thump (5).
- Attaching the drill bit, place its head into the drill chuck and insert it by turning up as far as it will go.

⚠ Note : Make sure to close the chip box after finishing the attachment of drill bit.
 ⚠ Note : Turn off the power switch before attaching & detaching drill bits. **There is a danger of receiving an injury.**

- In case of exchange with the new one, the different sized drill bit in length, the height of the paper clamp should be changed. The most suitable height of the paper clamp is placed at approx. 5MM below than the tip of the drill bit (1).
- Loose the clamp fixing screw with the hexagonal spanner turning to left direction (2) and adjust the height of the paper clamp up or down (3). Next, tighten the screw (4) at the right point shown in figure (1).



⚠ Note : Make sure not to place the paper clamp at upper position than the level of the tip of drill bit. It means that the paper clamp must be contacted on the surface of paper in advance to the tip of drill bit in drilling.



(2) Adjusting the drilling depth

- Pull down the operation arm until the drill bit penetrates into the wood plate about 0.5MM. This is the proper penetrating depth for drill bit.
- For adjusting the height of drill bit, pull out the locking pin (1) and turn the vertical adjuster to right or left direction (2), then the drill bit is going up or down(3).

☞ Note : Make sure to insert the locking pin into the nearest hole on the body cover after adjustment of the drilling depth. Using without fixing the locking pin may cause the breakage of the drill pin and of the table of machine.

☞ Note : These vertical adjustments are needed whenever the hollow drill bits are replaced, exchanged or sharpened.

(3) Setting the paper and adjusting the points to drill on the table

- Turn off the power switch.
- Loose the knob on the centering block and set it close to paper and tighten the knobs(1).
- Loose the knobs on the back margin adjuster and move the back margin plate to a desired location along the scales indicating depth at the left-hand and right-hand side of the table, and then tighten the knobs firmly(2).
- After setting the paper between the centering blocks and in front of the back margin adjustment plate, push down the paper holder(3) to ensure free-slip of paper during the movement of the table.
- To release the paper holder, push the upper lever downward(4).

☞ Note : To secure the knobs firmly, use the coin in your pocket in convenient way.

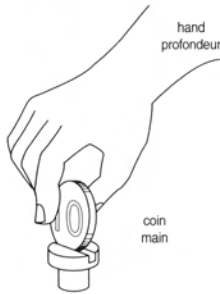
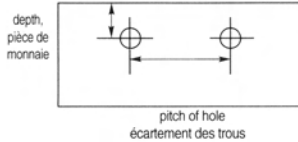
☞ Note : To drill the larger sized paper than size of the table, remove the paper holder by turning the holder shaft anti-clockwise with applying tool.

(4) Drilling

- Turn on the power switch (1).
- Start the drilling work by setting sheets of paper on the table.
- Pull the operation arm down at a speed of approx. 1 to 3 second according the quality and volume of paper in one breath (2) and lift it after it is lowered all the way.

☞ Note : Don't place a hand under the hollow pin. There is a danger of receiving an injury.

☞ Note : Don't touch the drill bit just after drilling because the bit becomes heated while drilling. Touching it may cause a burn.



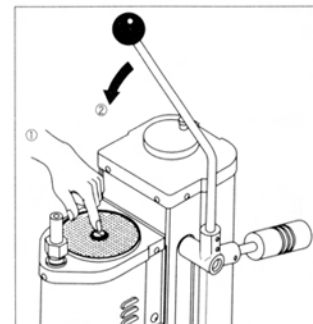
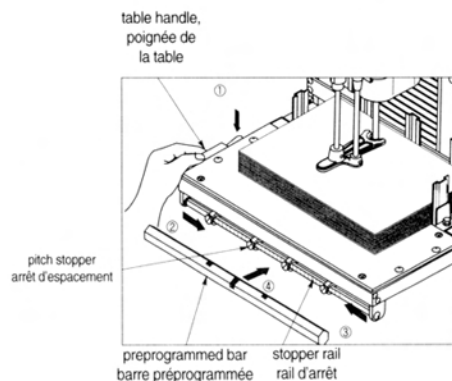
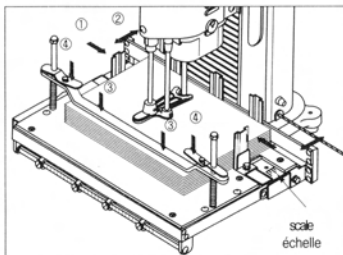
(5) Movement of the table & How to set the hole pitch

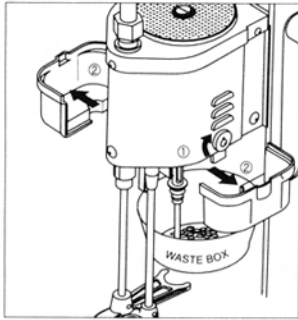
i) Using the pitch stopper

- Grip the table handle at the left side of the table with the left hand and slide the table in the left or right direction. And the table is then stopped at the location of the pitch stopper, where is determined to drill.
- the pitch stopper on the stopper rail at the location to drill and tighten the screw on the pitch stopper firmly with screw drive or coin.
- In order to operate the clutch for drilling pitch, push the clutch lever down with a thumb(1). If the table starts to move, remove the thumb from the lever and continue moving it until the next stopper(2,3).

ii) Using the preprogrammed bar (Optional part)

- When drilling the many quantity of paper with repeated drilling pattern, using the preprogrammed bar is very convenient way.
- You can mount the preprogrammed bar as replacement of the stopper rail in front of the table(4).
- Select the required pitch pattern by turning the pitch gauge rod and tighten the screw at both end of the rod.





(6) Discharging the paper dust

- Turn the knob upside (①) and pull out the chip box (②).
- After disposal of paper dust, be sure to lock the knob as the original position.

• Note : Place the waste box or a sheet of paper below the chip box before pulling out the chip box for to keep clean from the drop of paper dust.

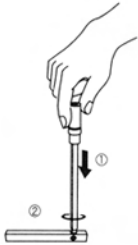
(7) Resharpener (regrinding) the drill bit

- Resharpener the tip of drill bit is the most important process among the all maintenances of machine. Always regrind the hollow drill bits and keep their blade point sharp.
- Special designed sharpener enables to sharpen the drill bit by hand easily. First, place the drill bit on the tip of sharpener. Next, push down the drill bit and turn it right direction until fine metal chips appear.
- If major burr has occurred when the hollow drill bit was ground, remove the burr by attaching oil stone during the machine driving(③).

8. Other Maintenances

(1) Replacement of wooden plate

If the blade receiving wooden plate is damaged or worn-out, holes will not be neatly drilled at the bottom of sheets. Be careful about the condition of the plate and the replacement with reverse side or with new one.



(2) Storing the tools

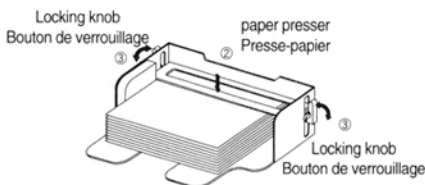
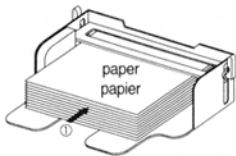
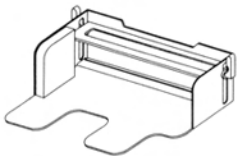
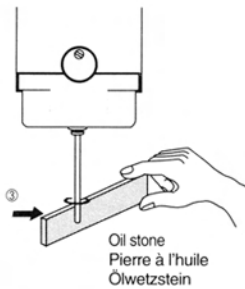
In the back of the machine, there is a sliding drawer, which is designed for keeping the maintenancetools to reuse in easy and quick way.

(3) Thermo-protector equipped inside the driving motor.

For the safety from the breakdown or fire as a result overheating of the motor, the thermo-protector is operated and the motor stops when the temperature of the motor is going up to 120 Celsius degree. After cooling in 20-30 minutes, the motor is available to operate again.

(4) How to use the paper cartridge

- Locate the stack of paper on the bottom of the cartridge and align the paper close to the corner(①).
- Push down the paper presser(②) and lock the knob by closing it to upside.



9. The assortment of hollow drill bit



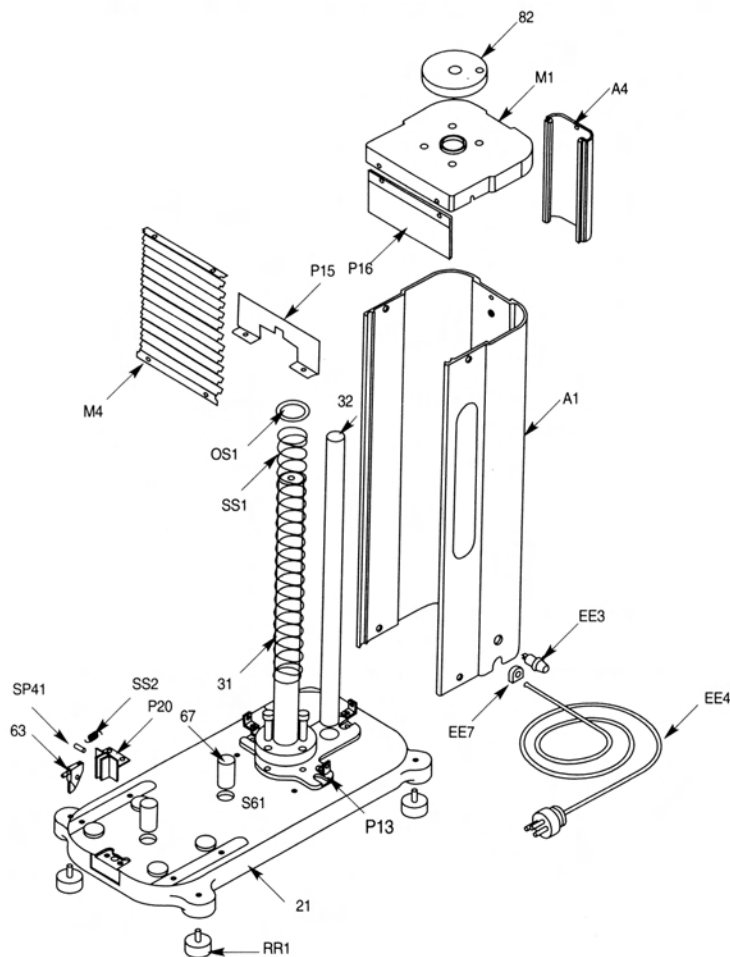
(unit : MM) (unité : mm) (unit : MM)

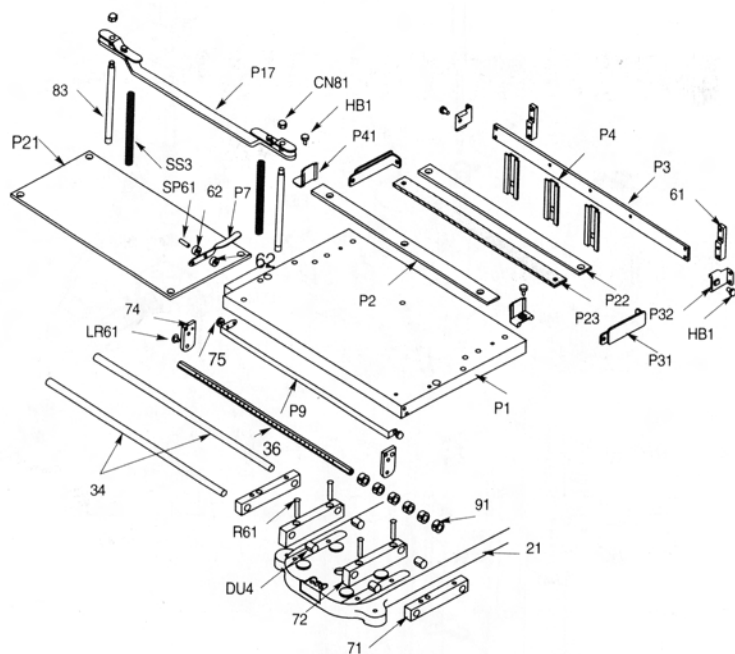
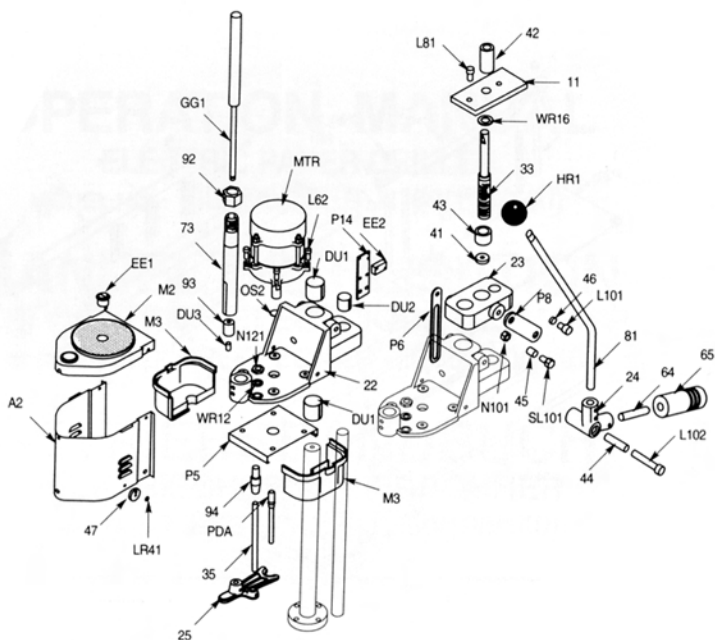
Model Spec. Item no.	Filepecker III 60		Filepecker III 100		Filepecker III 140	
	φ	L	φ	L	φ	L
1	3.0	30	3.0	30	3.0	30
2	3.5	30	3.5	40	3.5	40
3	4.0	40	4.0	50	4.0	50
4	4.5	40	4.5	60	4.5	60
5	5.0	62	5.0	70	5.0	70
6	5.5	62	5.5	80	5.5	80
7	6.0	62	6.0	90	6.0	90
8	6.5	62	6.5	90	6.5	90
9	7.0	62	7.0	104	7.0	140
10	8.0	62	8.0	104	8.0	140
11	9.0	62	9.0	104	9.0	140
12	10.0	62	10.0	104	10.0	140
13	11.0	62	11.0	104	11.0	140
14	12.0	62	12.0	104	12.0	140
15	13.0	62	13.0	104	13.0	140

10. Partlist

FRAME PART

SS2	T-S SPRING	1
SS1	POST SPRING	1
SP41	SPRING PIN 4-15	1
S61	BOLT M6-15	3
RR1	RUBBER FOOT	4
P20	T-S BRACKET	1
P16	COVER PLATE	1
P15	JABARA PLATE	1
P13	L-NUT	3
OS1	O-RING	1
M4	JABARA	1
M1	BODY COVER	1
EE7	CABLE PACKING	1
EE4	ELE' CABLE	1
EE3	FUSE BOX	1
A4	TOOL BOX	1
A1	FRAME COVER	1
82	VERTICAL ADJUSTER	1
67	TABLE SUPPORT	2
63	TABLE STOPPER	1
32	GUIDE POST-2	1
31	GUIDE POST-1	1
(21)	BASE PLATE	(1)
NO	DESCRIPTION	Q.TY





MOTOR PART

WR16	WASHER M16	1
WR12	WASHER M12	1
SL101	BOLT M10-25	1
PDA	HOLLOW DRILL BIT	1
P14	L-S BRACKET	1
P8	LINK ARM	1
P6	STOP LINK	1
P5	CHIP BOX GUIDE	1
OS2	O-RING S16	1
N121	NUT M12 x 1	1
N101	NUT M10	1
MTR	MOTOR	1
M3	CHIP BOX	2
M2	MOTOR COVER	1
LR41	BOLT M4-10	5
L102	BOLT M10-65	1
L101	BOLT M10-15	1
L81	BOLT M8-20	1
L62	BOLT M6-30	4
HR1	BALL HANDLE	1
GG1	AIR SPRING	1
EE2	LIMIT SWITCH	1
EE1	POWER SWITCH	1
DU3	DU BUSH 8-12	1
DU2	DU BUSH 22-25	1
DU1	DU BUSH 30-30	2
A2	MOTOR COVER	1
94	AUX BUSH	1
93	BUSH HOLDER	1
92	CLAMP FIXING SCREW	1
81	OPERATION ARM	1
73	P-PUSH HOLDER	1
65	WEIGHT BALANCE	1
64	JOINT	1
47	CHIP BOX KNOB	2
46	COLLAR-3	1
45	COLLAR-2	1
44	COLLAR-1	1
43	A-S NUT	1
42	A-S BUSH	1
41	A-S WASHER	1
35	AUX LOAD	1
33	ADJUST SCREW	1
25	PAPER CLAMP	1
24	LEVER ARM	1
23	ADJUST BRACKET	1
22	MOTOR BRACKET	1
11	CLAMP	1
NO	DESCRIPTION	Q,TY

TABLE PART

SS3	P-P SPRING 12-160	2
SP61	SPRING PIN 6-20	1
R61	BOLT M6-35	4
P41	SIDE GUIDE	2
P32	B-GUIDE BRACKET	2
P31	B-GUIDE BLOCK	2
P23	RECEIVING WOOD PLATE	1
P22	AUX' PLATE-2	1
P21	AUX' PLATE-1	1
P17	P-PUSH BAR	1
P9	T-S LINK	1
P7	TABLE LEVER	1
P4	GUIDE BLOCK	3
P3	BACK GUIDE PLATE	1
P2	S-GUIDE BAR	1
P1	TABLE	1
LR61	BOLT M6-10	6
HB1	KNOB	4
DU4	DU BUSHING 13 x 15	4
CN81	CAP NUT	2
91	STOPPER	6
83	POST	2
75	T-S COLLAR	2
74	T-S BRACKET	1
72	GUIDE BLOCK-2	2
71	GUIDE BLOCK-1	2
62	T-L COLLAR	2
61	B-GUIDE POST	2
36	STOPPER RAIL	1
34	TABLE GUIDE BAR	2
(21)	BASE	(1)
NO	DESCRIPTION	Q,TY