

CoilPro 2000*i*



Advanced Document Systems & Supply, Inc.
PHONE: 800-808-2377 · FAX: 888-237-7329
www.adss.net

OPERATION MANUAL

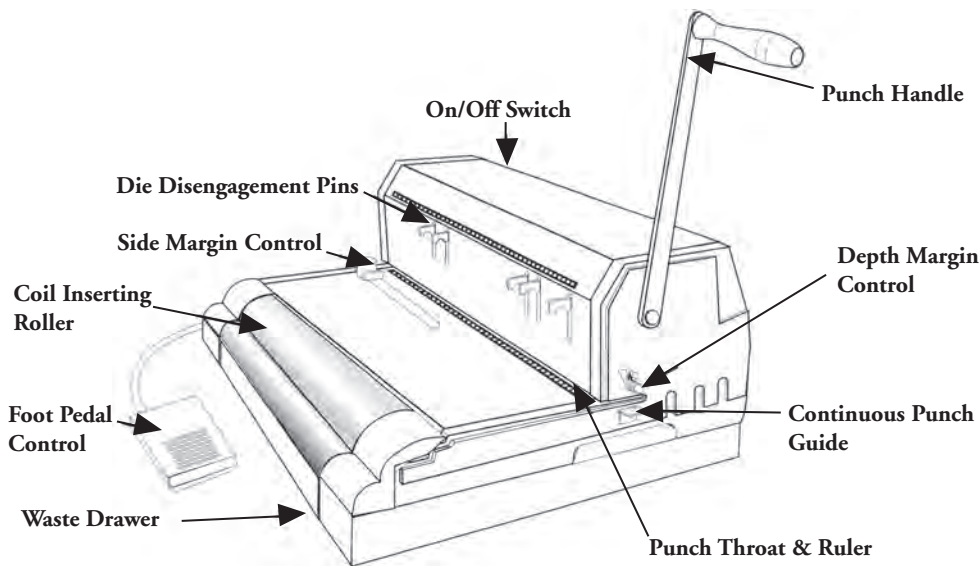
Introduction

Congratulations on the purchase of your new CoilPro 2000i, A professional and heavy-duty coil punch and bind machine. Your CoilPro 2000i was carefully designed with a full range of functions and premium quality components to guarantee an effortless and professional bind. As well as many years of trouble- free service.

Important

We recommend that you take a few minutes to familiarize yourself with the functions of your new CoilPro 2000i. You will find that with just a little practice, anyone can achieve professional results.

FEATURES



ASSEMBLY

1. Place your new CoilPro 2000i on a sturdy working table. **See Picture 1**
2. Remove the screw from punching axle. Insert the punch handle, in a vertical position, onto the punching axle and tighten the screw into the punching axle (make sure screw is well fastened counter clockwise). **See Picture 2**
3. Turn on switch and press foot pedal to test inserting roller. **See Picture 3**



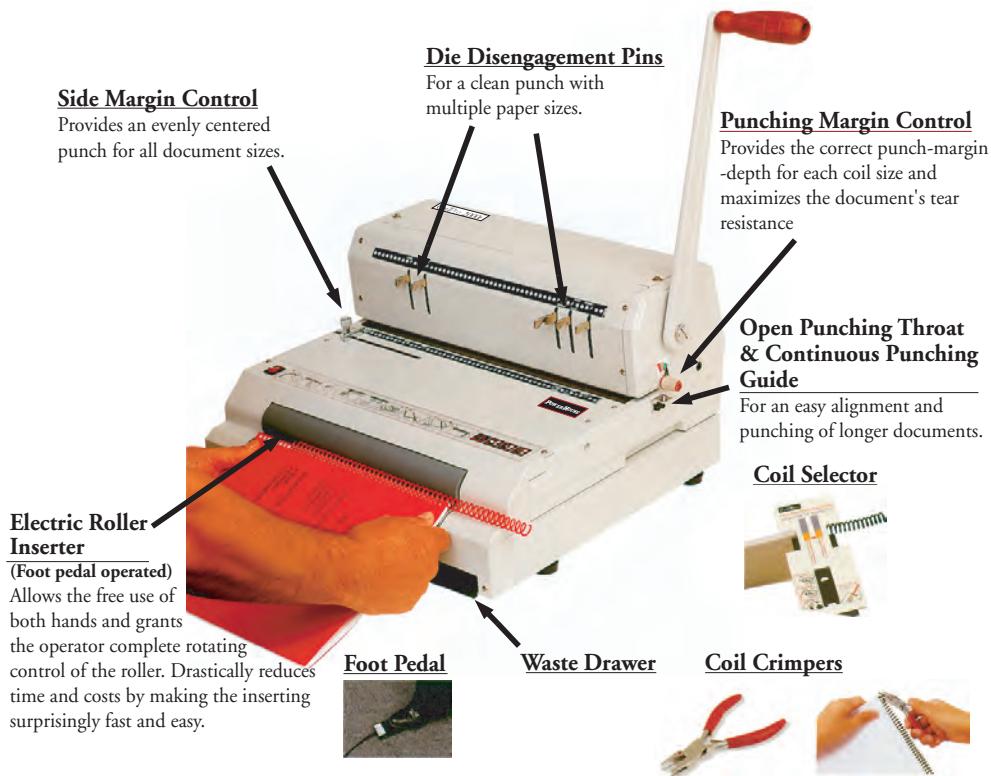
WARRANTY POLICY

Your CoilPro 2000i has a warranty of one year from the date of purchase. In the event of a manufacturer's defect, your distributor (at option) will repair or replace it. **IMPORTANT:** This warranty does not cover damages due to improper use or miss treatment of the unit, including any extraordinary event leading to the damage of the machine, whether it is reversible or not.

If the CoilPro 2000i is not working properly, first follow the corrective actions above. If the problem persists, please contact your dealer for further instructions. Please have your machine's serial number and the purchase date ready. If the machine must be returned to your distributor, it is your responsibility to properly pack and ship it. As any damages incurred during its transportation is not covered by our warranty policy.

CoilPro 2000i

SPECIFICATIONS & FEATURES



SAFETY INSTRUCTIONS

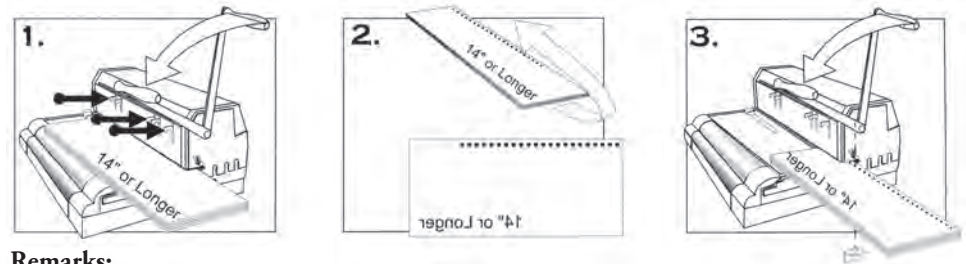
1. Keep fingers, hair, jewelry, neckties and any loose clothing or objects away from roller, as they may be accidentally pulled into the roller.
2. Do not allow children to operate the machine.
3. Always turn switch-off and place foot pedal out of reach when machine is not in use.
4. To reduce risk of electric shock, never operate the CoilPro 2000i near water.
5. Do not use the CoilPro 2000i if power cord is damaged.
6. Do not allow the electric cord to be in contact with hot surfaces.
7. In case of malfunction, return the unit to your distributor for service. This does not contain any part that can be serviced by the consumer or operator.



FOR PUNCHING DOCUMENT 14" (356MM) OR LARGER

1. Align sheets as indicated on punch throat ruler. Make sure all die disengagement pins are pushed in.
2. Insert sheets and pull handle forward to punch. **See Picture 1**
3. Remove sheets and flip them over as illustrated. **See Picture 2**
4. Insert sheet from right-hand-side. Pull the handle forward and punch. **See Picture 3**

Important: Document must be inserted in such a way as to place one of the already perforated holes onto the Continuous Punch Guide. Make sure that the last hole (Document edge), if partially covered by the punch throat & ruler, is aligned to a disengaged die, otherwise your document will be left partially perforated.



Remarks:

- a) When using your CoilPro 2000i for the first time, punch a few waste sheets. This will clean-off and excess oil on the punching dies.
- b) Recommended number of sheets per punch: 12-15 (20 lbs paper)
- c) Maximum recommend single punching capacity :17 sheets (20 lbs paper)

Features

Model	CoilPro 2000 I - 6	CoilPro2000 I - 51	CoilPro 2000 I - 41
Pitch	6mm	5:1	4:1
Punch Length	13" (55 dies)	13" (65 dies)	13" (53 dies)
Inserting	Electric		
Hole Punch Round	(4mm radius)		
Disengaging Dies	5		
Single Punching Capacity	17 sheets (20 lbs paper)		
Binding Capacity	Up to 7/8"		
Weight & Volume	59 lbs & 2.8 CbFt		
Warranty	One Year		

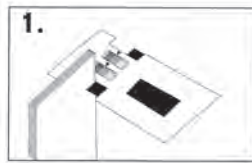
COIL INSERTING (BINDING)

1. Align punched document and place it on top of machine or table. Insert the coil into the first 4 to 5 holes. **See Picture 1**
2. Hold document evenly against roller (coil must slightly touch the roller) **See Picture 2**
3. Press foot pedal. The coil will automatically move forward inserting itself into the holes. **See Picture 2**
4. After the last hole insertion, **Immediately** move document away from roller and/or stop pressing the foot pedal. Remark: if coil is over inserted or some pages are un-inserted, simply flip document over and proceed with insertion as per step 2.
5. Use crimpers to cut & crimp the excess coil. Make sure you crimp-in both ends. This procedure will prevent the document from unbinding itself. **See Picture 3**

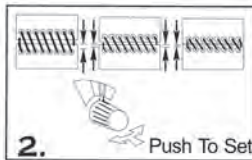


SET-UP

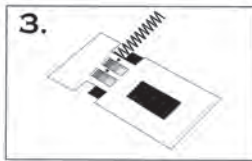
1. Use coil size guide to determine the correct :
 - Depth Margin
 - Coil Diameter



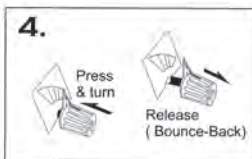
2. To adjust the correct punching margin, press and rotate the depth margin control.



3. (optional) You may use the coil diameter selector to determine or double check that you are using the correct diameter for your document.

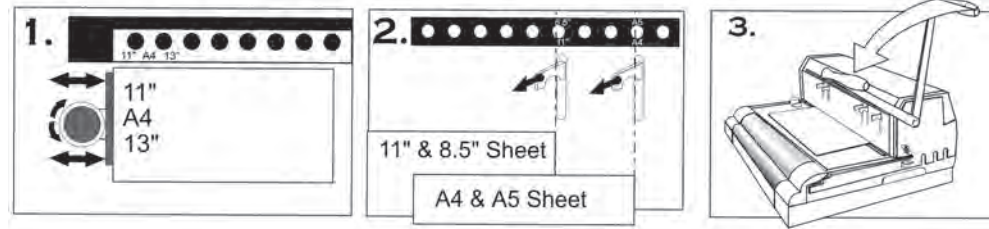


4. To adjust the depth margin, press and rotate the depth margin control at the same time. Release it upon reaching the desired position. The depth margin control button does not bounce-back, rotate it slightly back and forth until it does so.



PUNCHING

1. Use the punch throat ruler and side margin and side margin control to center the punching of your document. **See Pictures 1 & 2**
Hint: Insert a sheet and make sure you disengage any hole that is left partially exposed on the punch throat ruler. Failing to do so, will leave a partially perforated hole at the edge of your document.
2. Insert sheets and pull handle toward you to punch. **See Picture 3**



TECHNICAL INFORMATION

CoilPro 2000i

BINDING FORMAT

Legal (14" or 356 mm)
 Oficio (13" or 330 mm)
 A4 (11.69" or 297 mm)
 Letter (11" or 279 mm)
 A5 (8.27" or 210 mm)
 1/2 Letter (8.5" or 215.9 mm)

SIZE 4:1
 = 53 + 2 holes
 = 53 holes
 = 46 holes
 = 43 holes
 = 33 holes
 = 32 holes

SIZE 6 mm
 = 55 + 2 holes
 = 54 holes
 = 49 holes
 = 46 holes
 = 34 holes
 = 35 holes

SIZE 5:1
 = 65 + 5 holes
 = 65 holes
 = 59 holes
 = 55 holes
 = 41 holes
 = 42 holes

CAPACITY & DIAMETER

No. Sheets (20 lbs)	DOCUMENT		COIL mm	No. Sheets (20 lbs)	DOCUMENT		COIL mm
	inch	mm			inch	mm	
25	1/8"	3.2 mm	5 mm	180	3/4"	19.0 mm	20 mm
35	5/32"	4.0 mm	6 mm	200	25/32"	19.8 mm	22 mm
45	3/16"	4.8 mm	7 mm	230	7/8"	22.2 mm	25 mm
60	1/4"	6.4 mm	8 mm	250	1 "	25.4 mm	28 mm
70	9/32"	7.2 mm	9 mm	280	1-1/16"	27.0 mm	30 mm
80	5/16"	7.9 mm	10 mm	300	1-1/8"	28.5 mm	32 mm
100	13/32"	10.3 mm	12 mm	350	1-5/16"	33.3 mm	38 mm
120	15/32"	11.9 mm	14 mm	400	1-9/16"	39.7 mm	45 mm
150	19/32"	15.0 mm	17 mm	450	1-7/8"	47.5 mm	50 mm